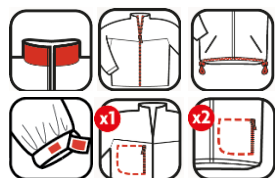


YANG REFLECT JACKET



8000 mm
3000 mvp



Colours	40/42	44/46	48/50	52/54	56/58	60/62
	S	M	L	XL	XXL	XXXL
Black	5YARBS	5YARBM	5YARBL	5YARBXL	5YARBXXL	5YARBXXXL

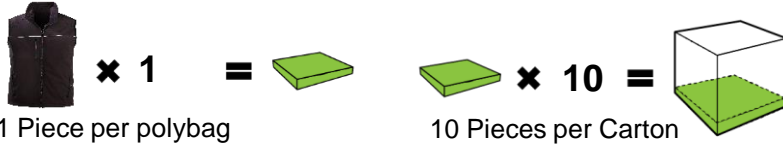
General Description / Materials

Material	Outshell 1 : Softshell 94% Polyester & 6% Spandex + TPU + Fleece, 310g/m ² Outshell 2 : 100% Polyester Ripstop elastic fabric with TPU
Lining	100% Polyester fleece Lined
Waterproof	8000 mm
Breathable	3000 mvp
Collar	Straight
Flap	Inside flap on collar
Closing	Water proof zipper up to the top of the collar
Sleeves	Scratch adjustable cuffs
Elastic bottom tightening	With block cords on inner sides
Reinforcement	Ripstop elastic fabric with TPU reinforcement on elbows and shoulders
Hang loop	Hang loop inside collar
Additional information	Water proof zipper on pocket

YANG REFLECT JACKET



Packaging & Storing



Always transport and store in the original packaging. Store in a dry place, away from direct sunbeam.

Product Standards

This article complies with EU Directive 89/686/EEC and Standard EN ISO 13688:2013



EN 342:2004



0.351 m²/Kw
X
3
X

Washing instructions:



General Norms Explanation

- Brand name
- Body size
- CE logo
- UIS
- Washing Conditions
- Material 94% Polyester / 6% Spandex
- Version date v.20150520

Ref. **XXXXXX**

Taille **X**

- Product reference
- Size

EN342:2004

X
X
X
X
X

Resultant effective thermal insulation /_{cler}
Effective thermal insulation /_{cler} (optional)

EN14058:2004

X
X
X
X
X

Insulation value /_{cler} in m²/KW (optional)

EN343:2003 +A1:2007

X
X

EN 14058 Protection against cool environment (≥ -5 °C)

EN14058:2004

EN 343 Protection against rain

EN343:2003 +A1:2007

EN342:2004
Protection against cold environment (< -5 °C)

Performance level	Air permeability (AP) in mm/s	Resistance to water penetration class (WP) in Pa
1	100 < AP	8000 ≤ WP ≤ 13000
2	5 < AP ≤ 100	WP > 13000
3	AP ≤ 5	-

Performance level	Thermal resistance (R _{cl}) in m ² /KW	Air permeability (optional) in mm/s	Water penetration resistance (optional) in Pa
1	0.06 ≤ R _{cl} < 0.12	100 < AP	8000 ≤ WP ≤ 13000
2	0.12 ≤ R _{cl} < 0.18	5 < AP < 100	WP > 13000
3	0.18 ≤ R _{cl} < 0.25	AP ≤ 5	-

Performance level	Resistance to water penetration in Pa	Water vapour resistance (R _e) min
1	Wp ≥ 8000	R _e above 40
2	Wp ≥ 8000	20 < R _e ≤ 40
3	Wp ≥ 13000	R _e ≤ 20